

NoHo, NYC

360 BOWERY





360 BOWERY

Bowery

E 4th St





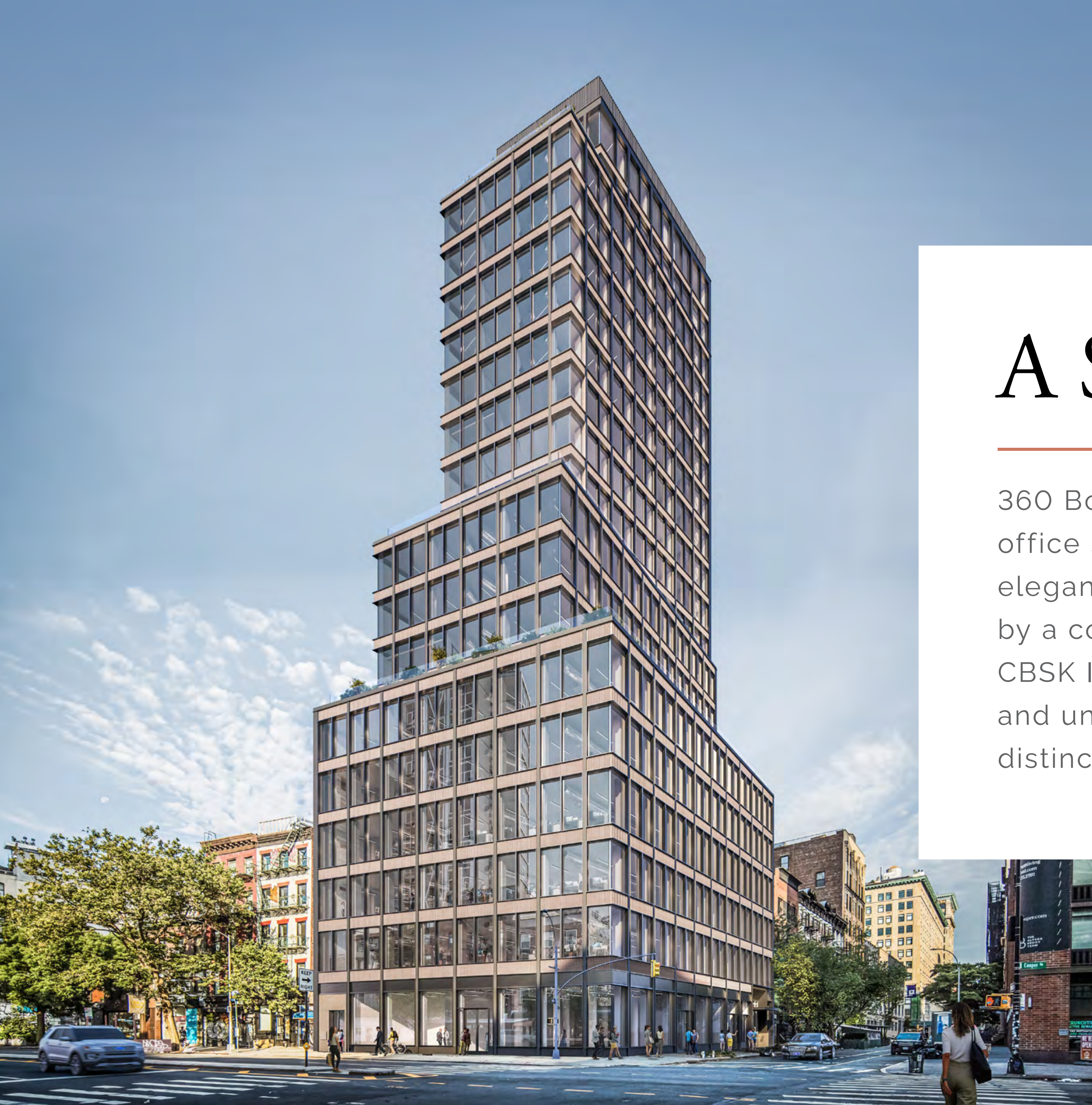
360 BOWERY

CRAFTED



# A Singular Experience

360 Bowery features a limited collection of full-floor office suites with a notable style and effortless elegance that is quintessentially NoHo. Brought to life by a continued partnership between Morris Adjmi and CBSK Ironstate, 360 Bowery offers an entirely privatized and unique experience amidst one of Manhattan's most distinctive neighborhoods.





# Full-time attended lobby



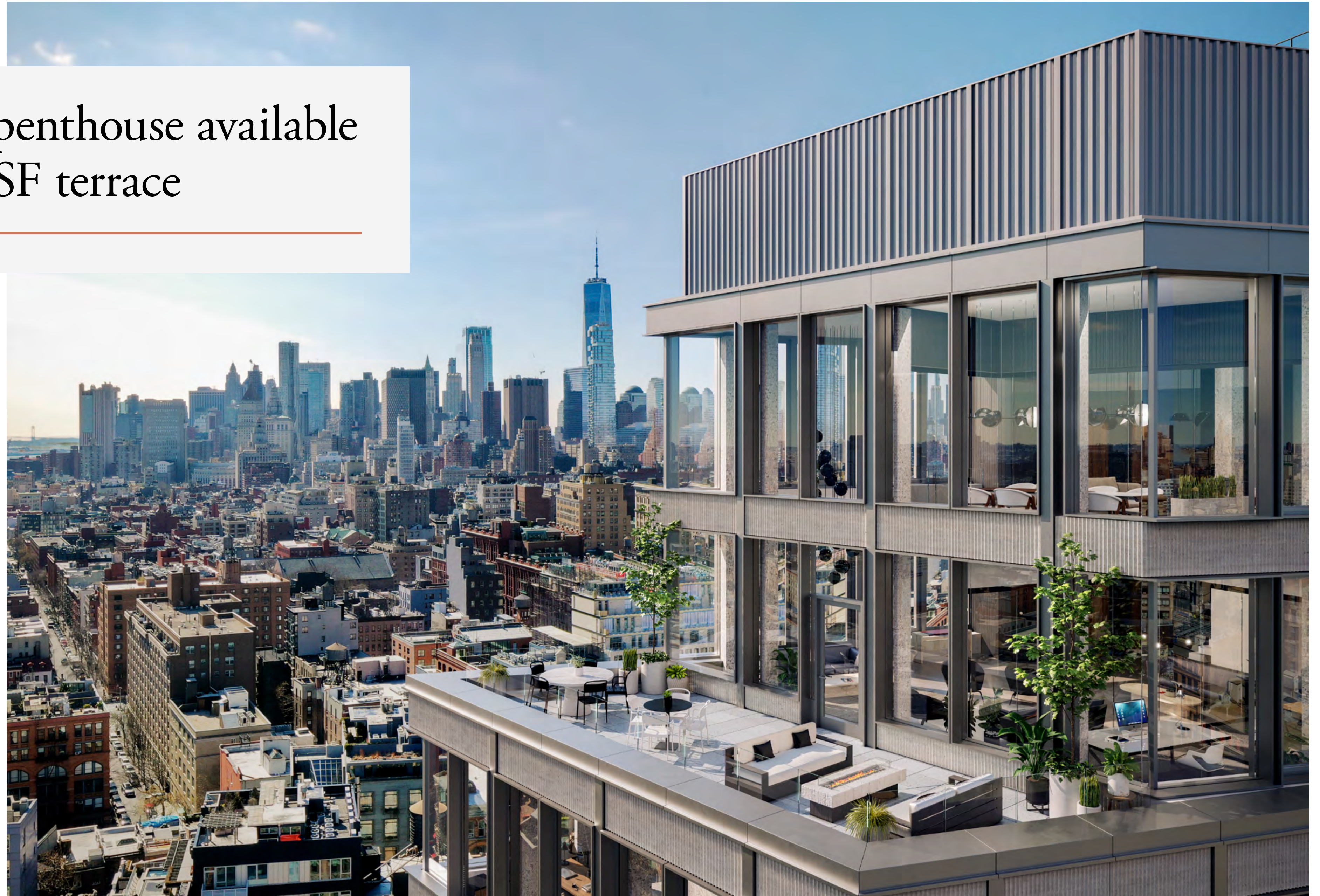


Showcase office  
space to welcome  
clients & guests





Exclusive duplex penthouse available  
with private 800 SF terrace







Opportunity for private  
entrance on Bowery





360 BOWERY

EFFORTLESS





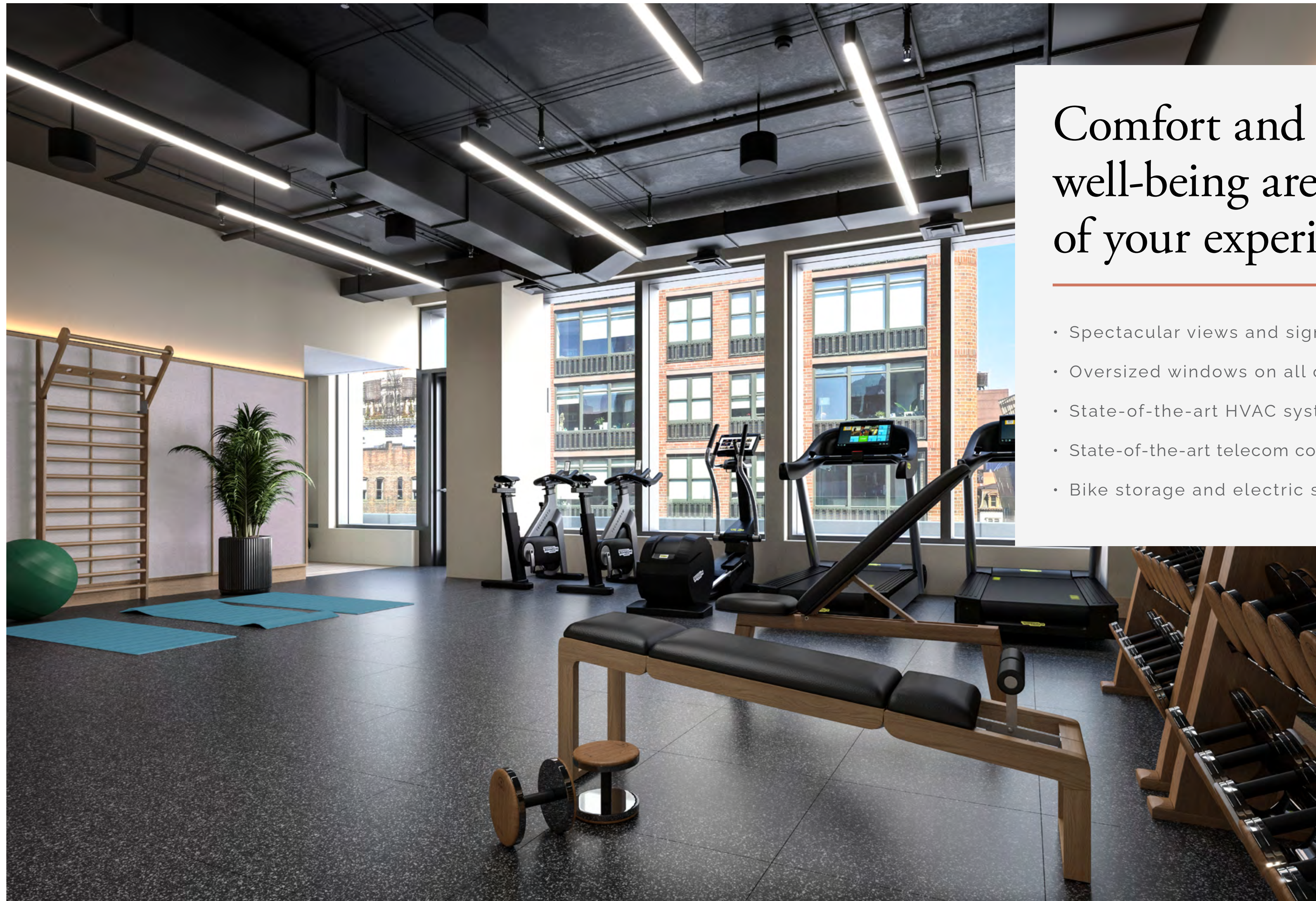
360 Club lounge with  
flexible meeting areas  
& two boardrooms



360 Club amenity floor with state-of-the-art fitness studio with facilities & 2,900 SF common terrace overlooking Lower Manhattan







## Comfort and personal well-being are at the forefront of your experience

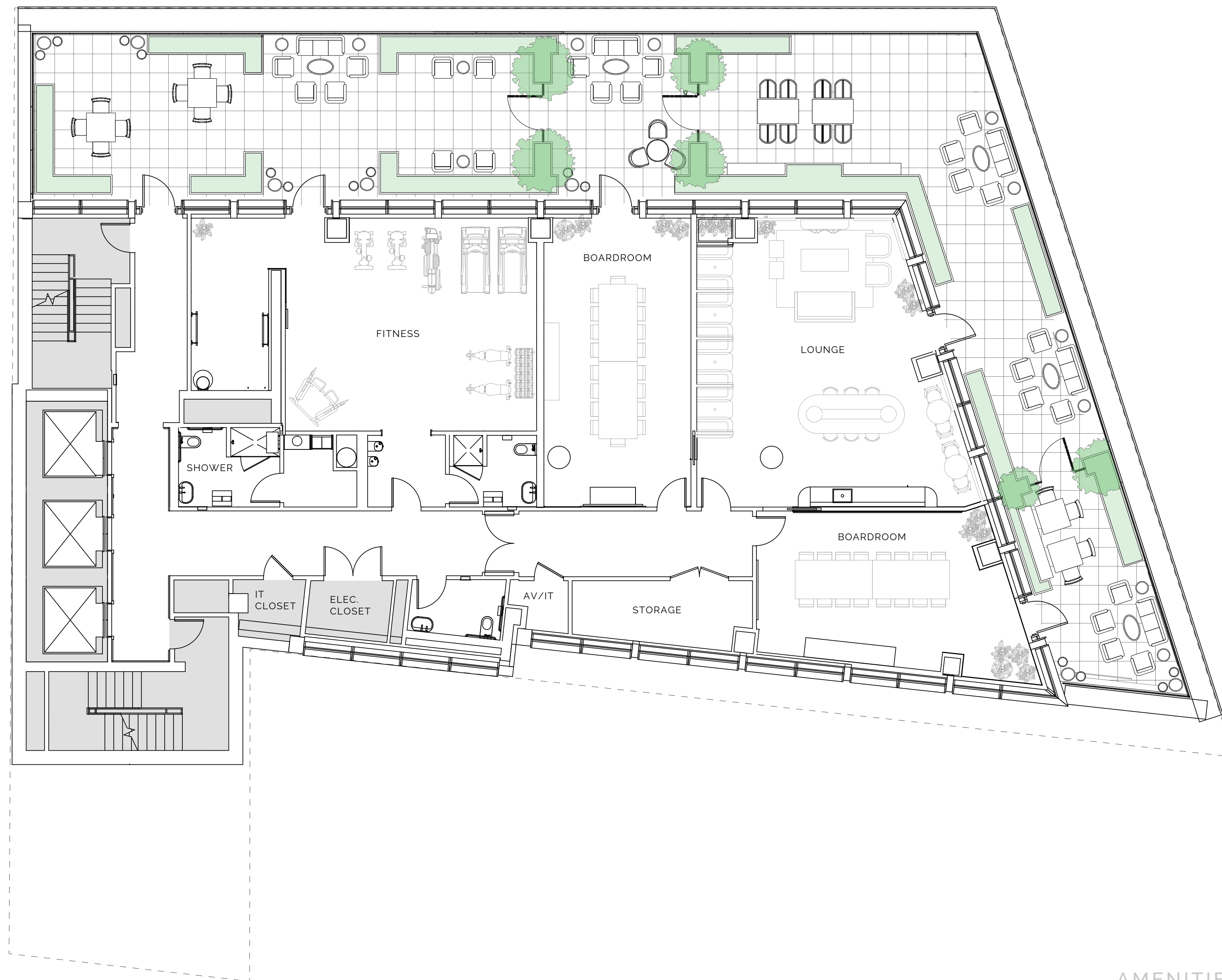
- Spectacular views and significant natural light
- Oversized windows on all office floors
- State-of-the-art HVAC system including AtmosAir filtration
- State-of-the-art telecom connectivity for seamless communication
- Bike storage and electric scooter charging stations



# Level 7

360 CLUB

5,888 SF



AMENITIES





AVAILABILITY 03

360 BOWERY

ELEGANT



AVAILABILITY

100,000+ RSF

TOTAL OFFICE SPACE

3,900–10,000 RSF

FLOOR PLATES

Exclusive Penthouse

OPPORTUNITY

Private Outdoor Space

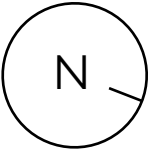
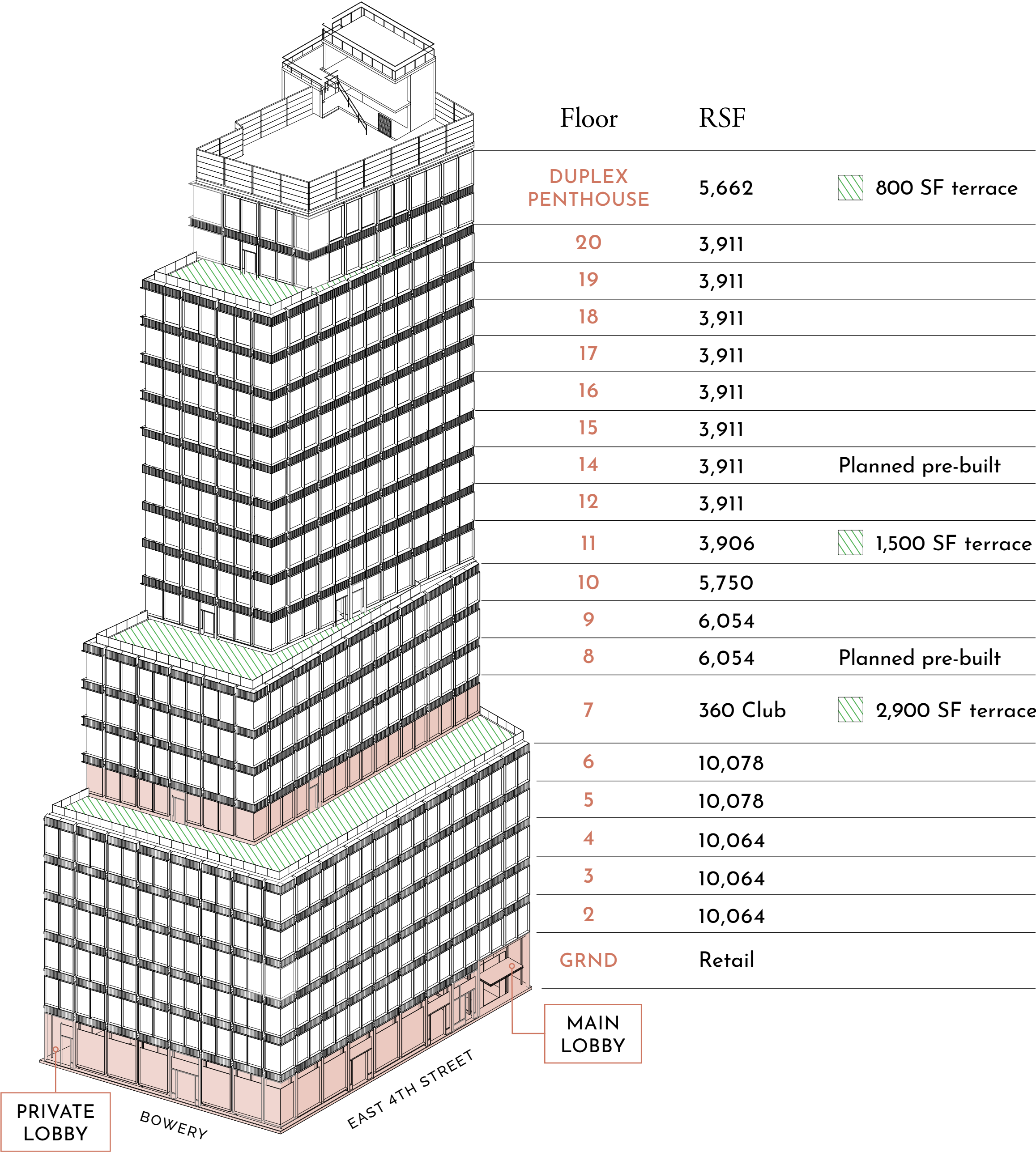
AVAILABLE

6,000 SF

360 CLUB AMENITY FLOOR

12'

INTERIOR CEILING HEIGHTS



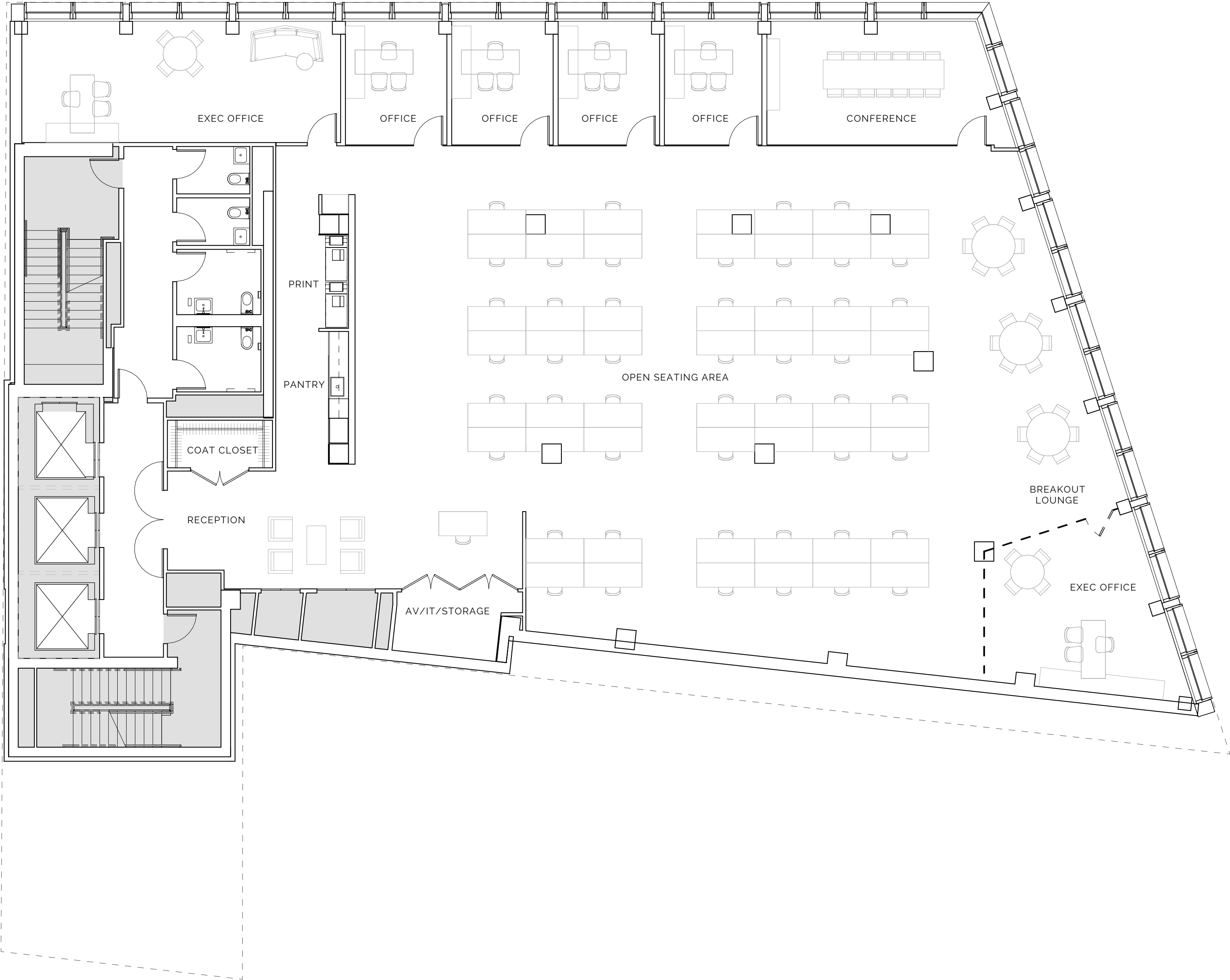
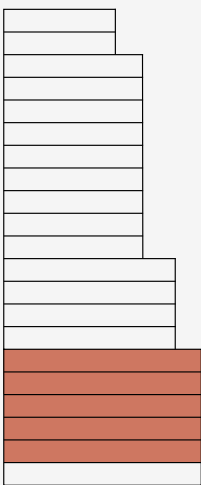


# Level 2–6

OPEN LAYOUT

10,078 RSF

Workstations	36
Typical Office	4
Executive Office	2
Conference	1



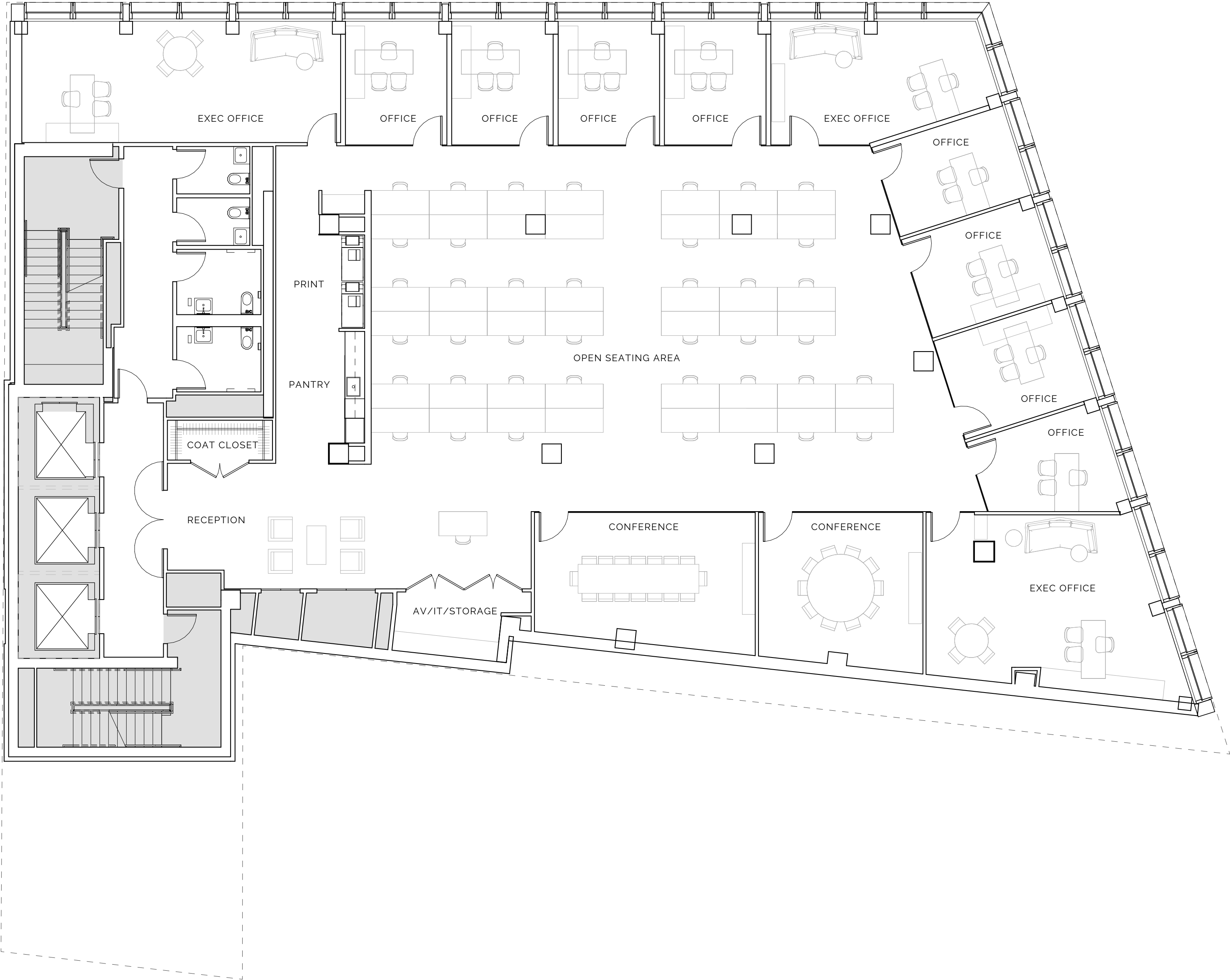
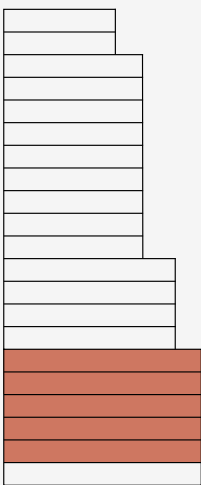


# Level 2-6

OFFICE INTENSIVE

10,078 RSF

Workstations	39
Typical Office	8
Executive Office	3
Conference	2



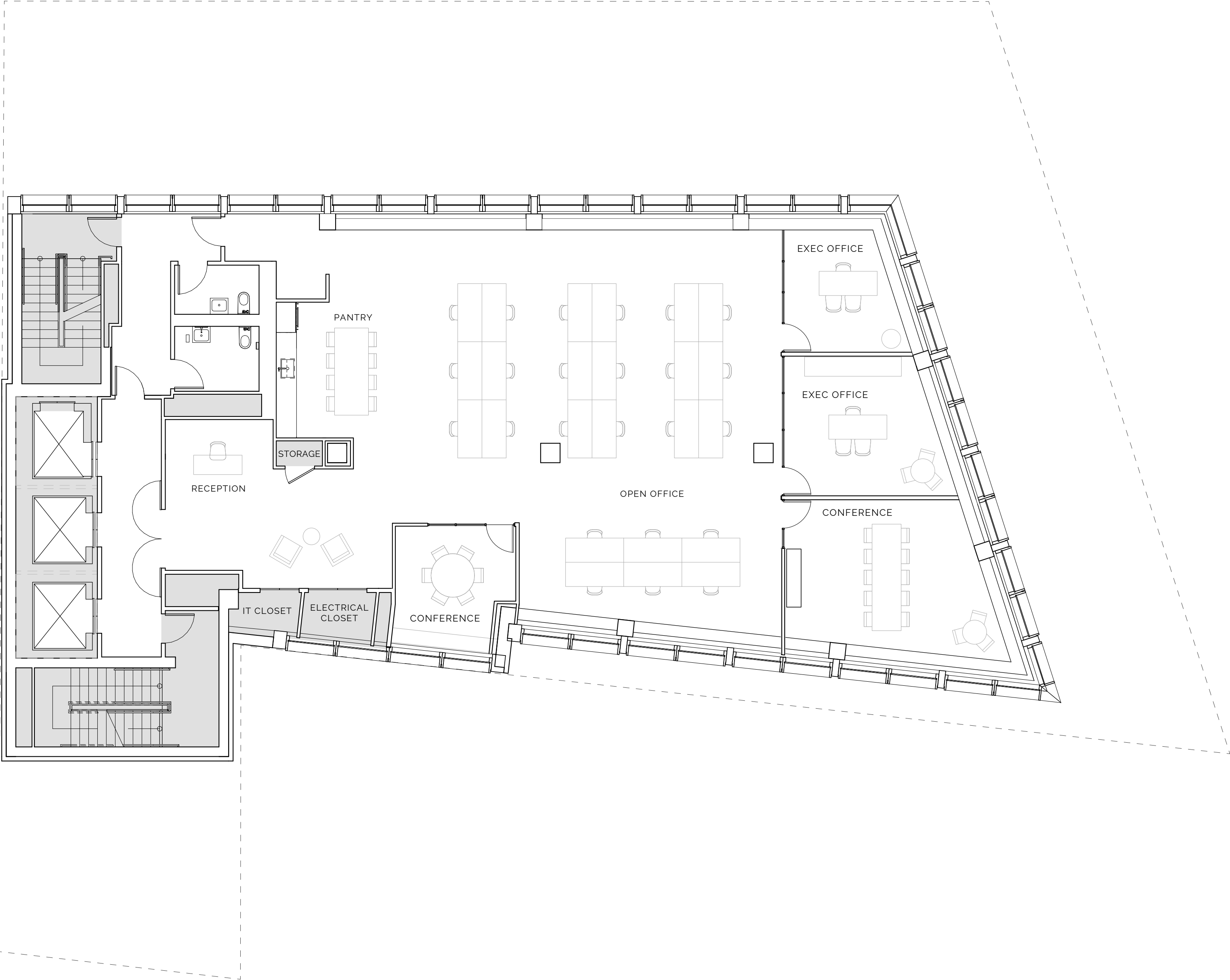
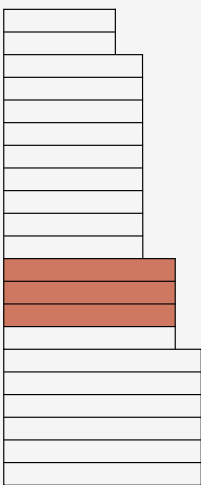


# Level 8–10

OPEN LAYOUT

6,054 RSF

Workstations	18
Executive Office	2
Conference	2



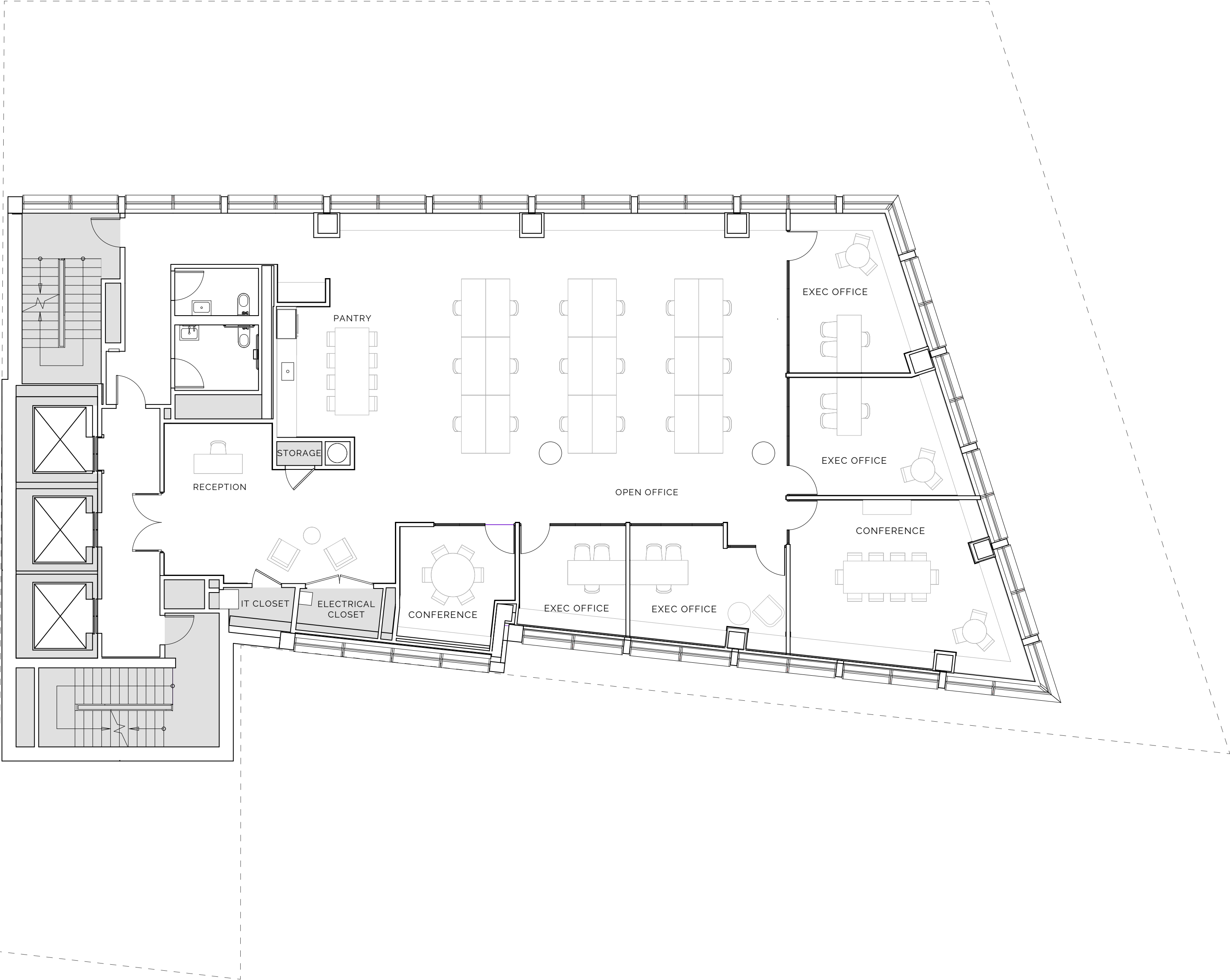
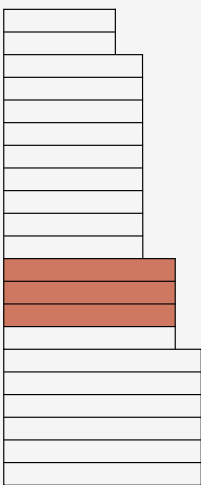


# Level 8–10

OFFICE INTENSIVE

6,054 RSF

Workstations	18
Executive Office	4
Conference	2



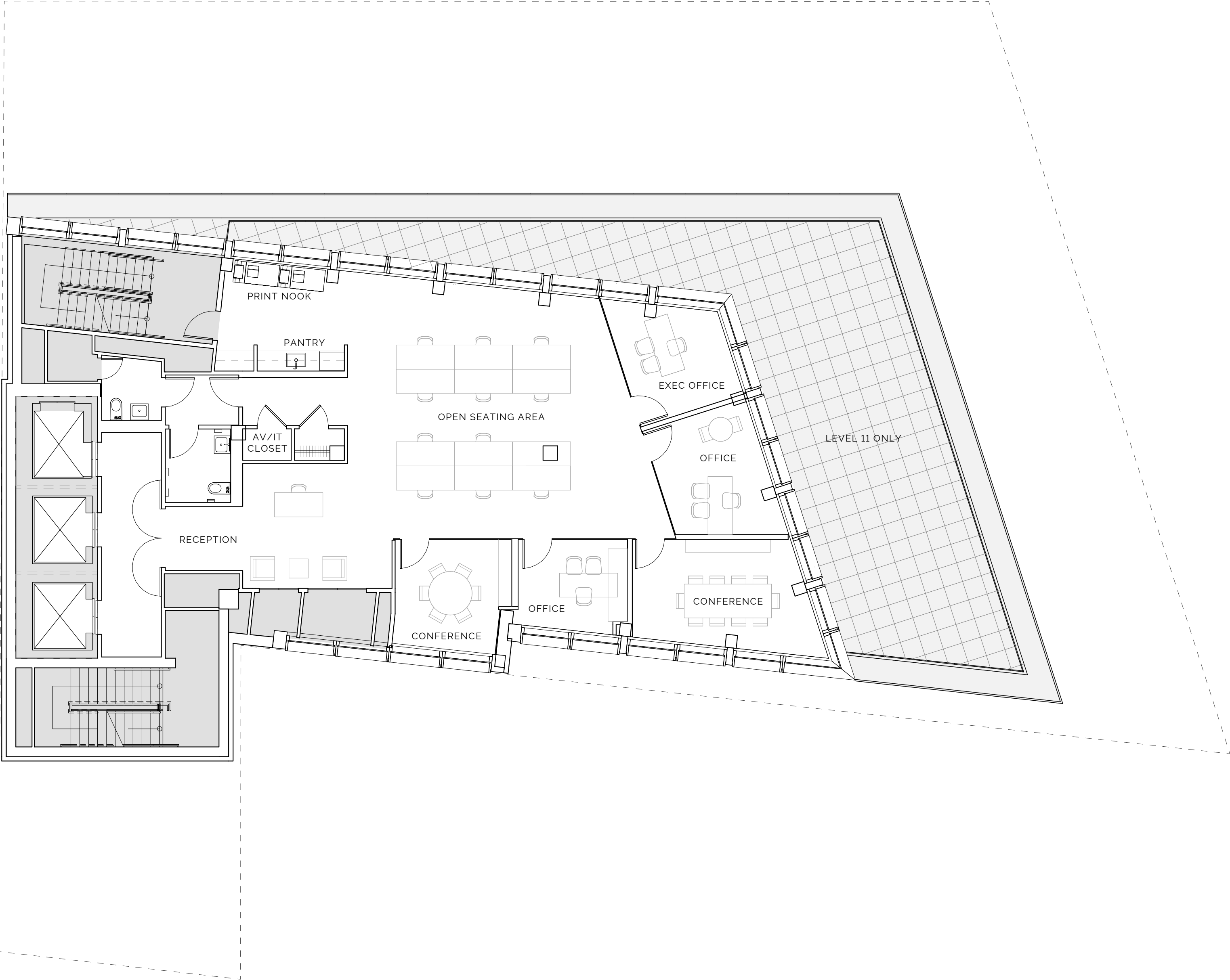
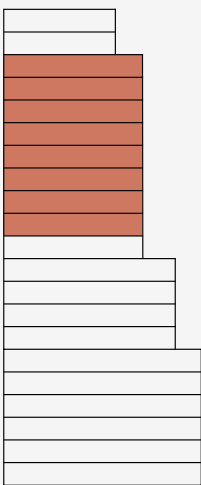


# Level 11–20

OFFICE INTENSIVE

3,911 RSF

Workstations	11
Typical Office	2
Executive Office	1
Conference	2



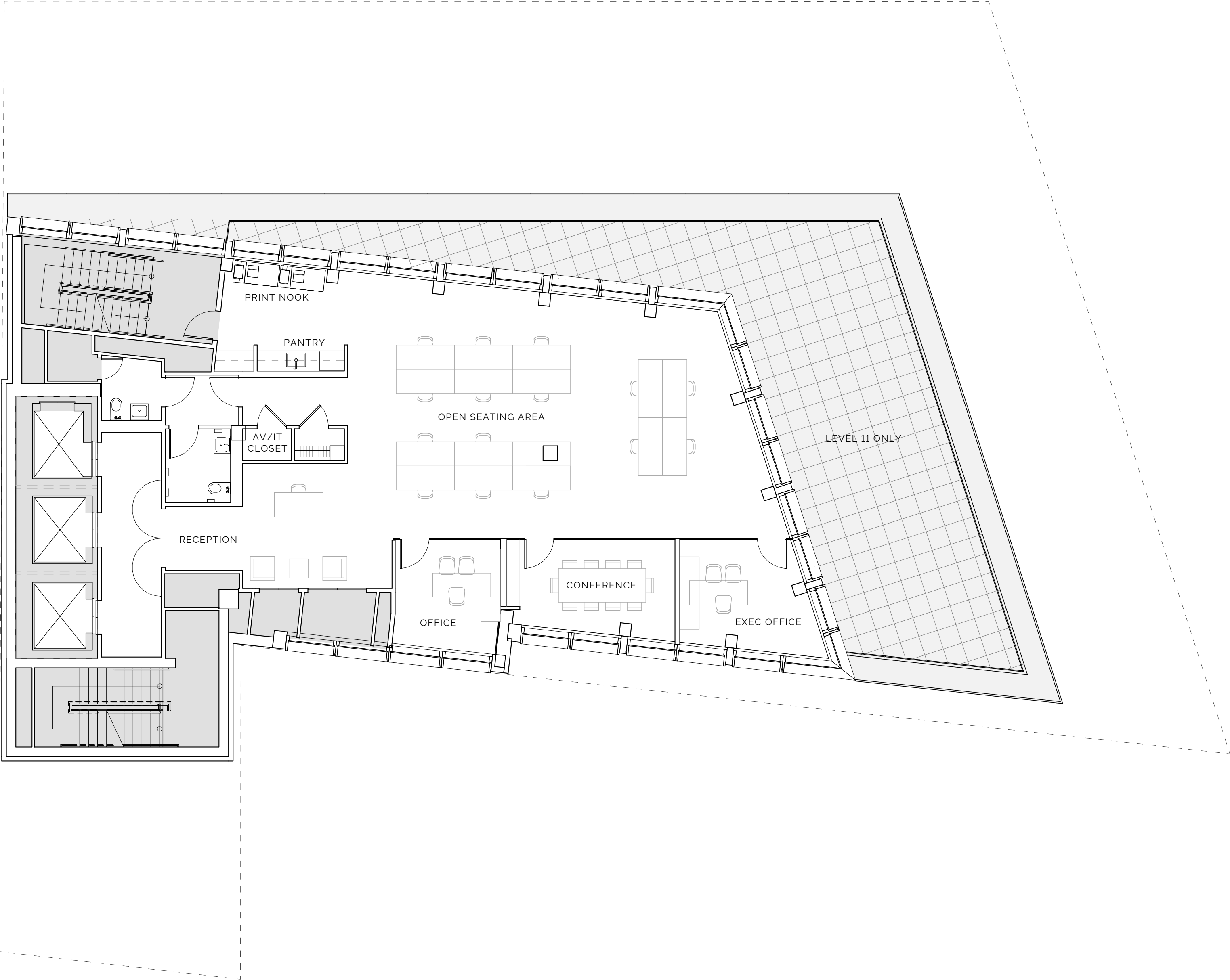
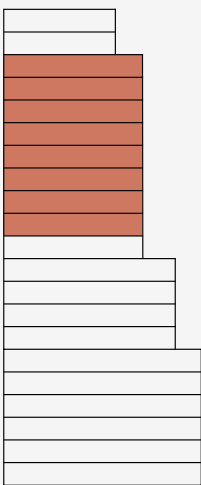


# Level 11–20

OPEN LAYOUT

3,911 RSF

Workstations	15
Typical Office	1
Executive Office	1
Conference	1



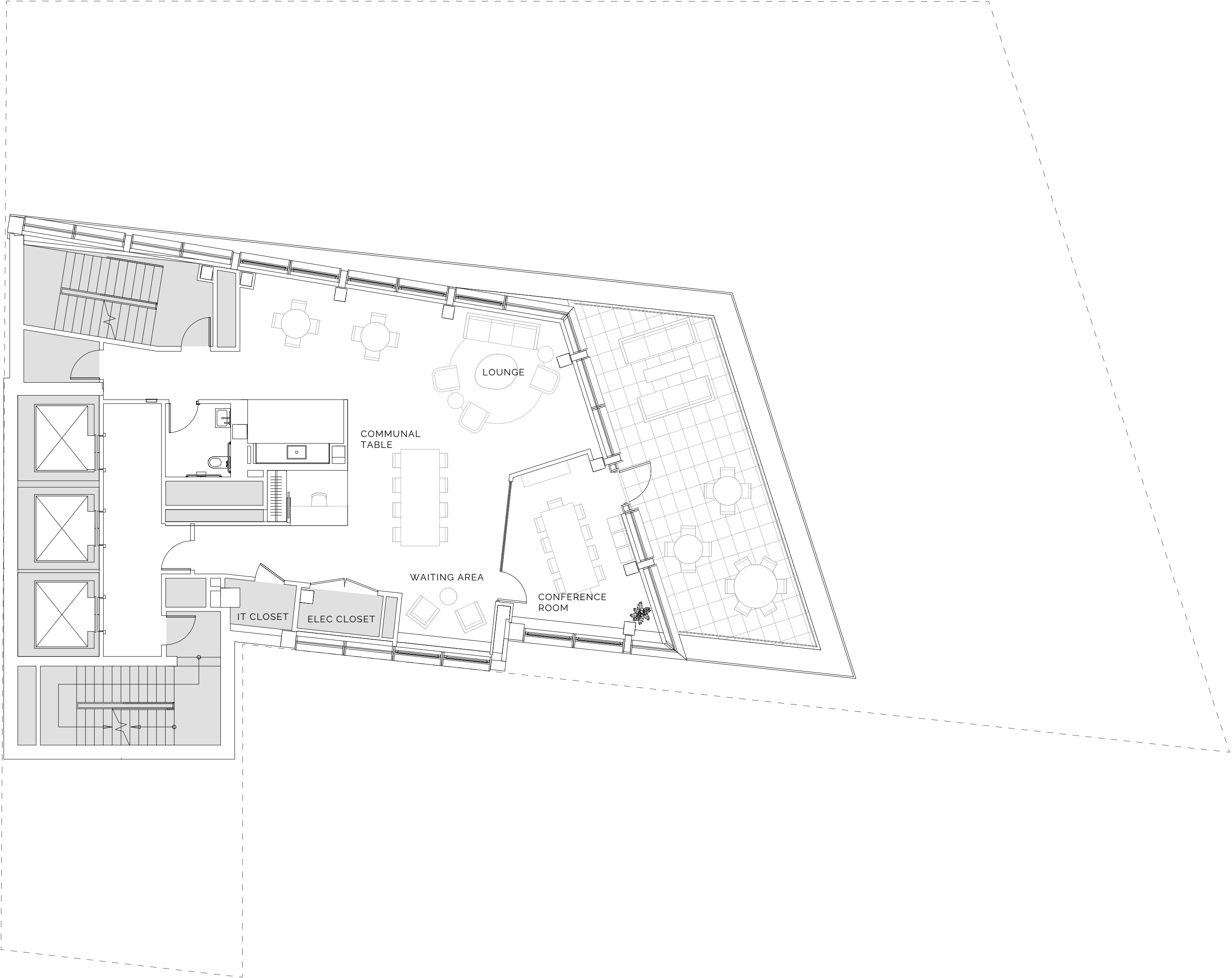
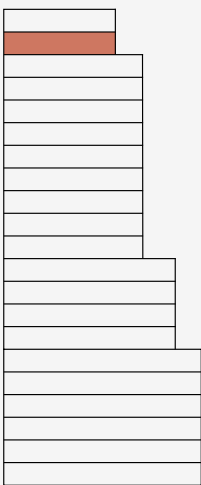


# Level 21

PENTHOUSE | CONFERENCE LAYOUT

2,831 RSF

Workstations	0
Typical Office	0
Executive Office	0
Conference	1



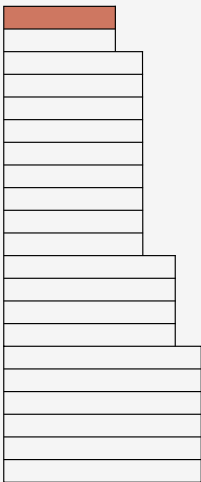


# Level 22

PENTHOUSE | OPEN LAYOUT

2,831 RSF

Workstations	7
Typical Office	1
Executive Office	1
Conference	1





# Choose from one of two distinct building finishes

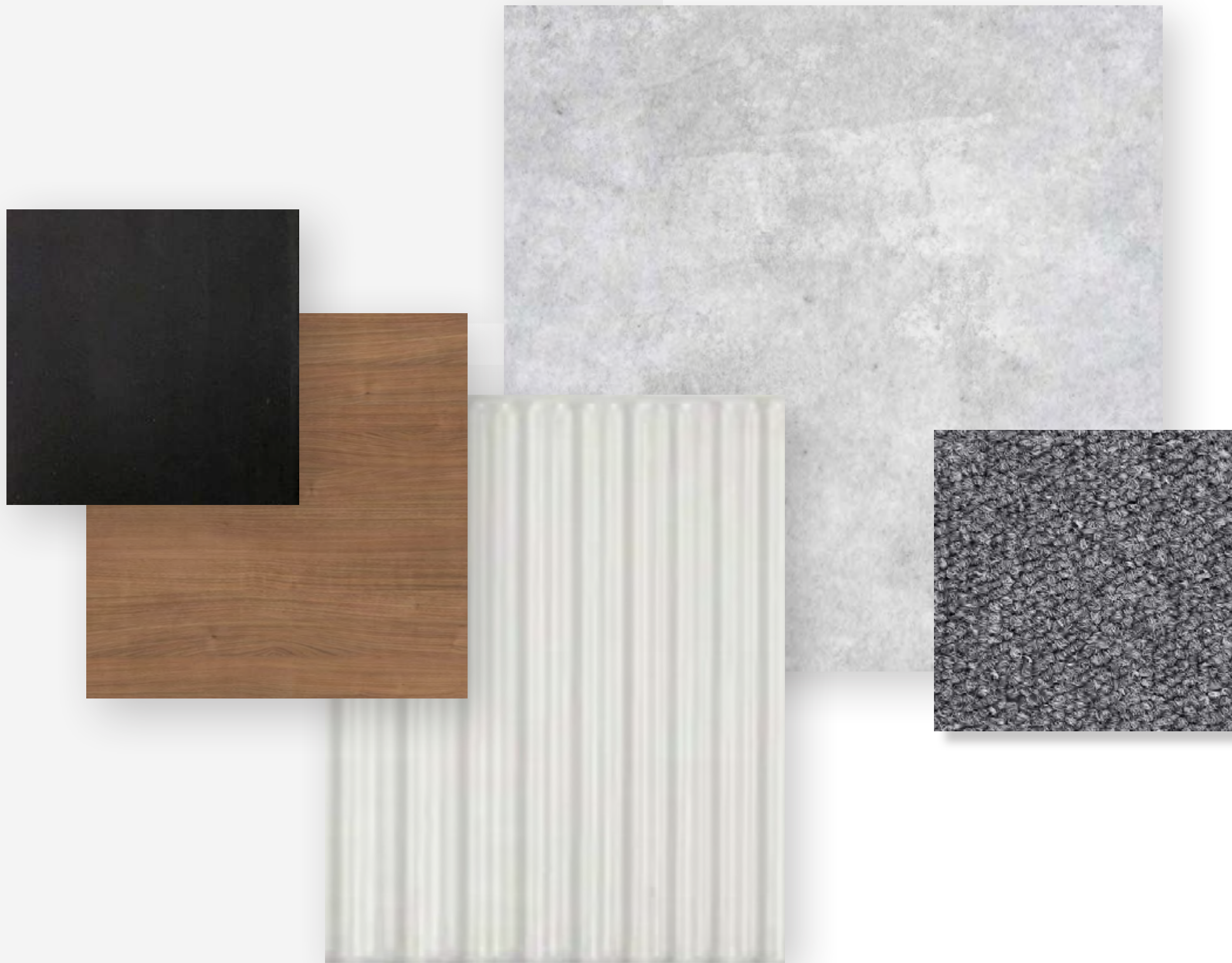
## ALLOY

---

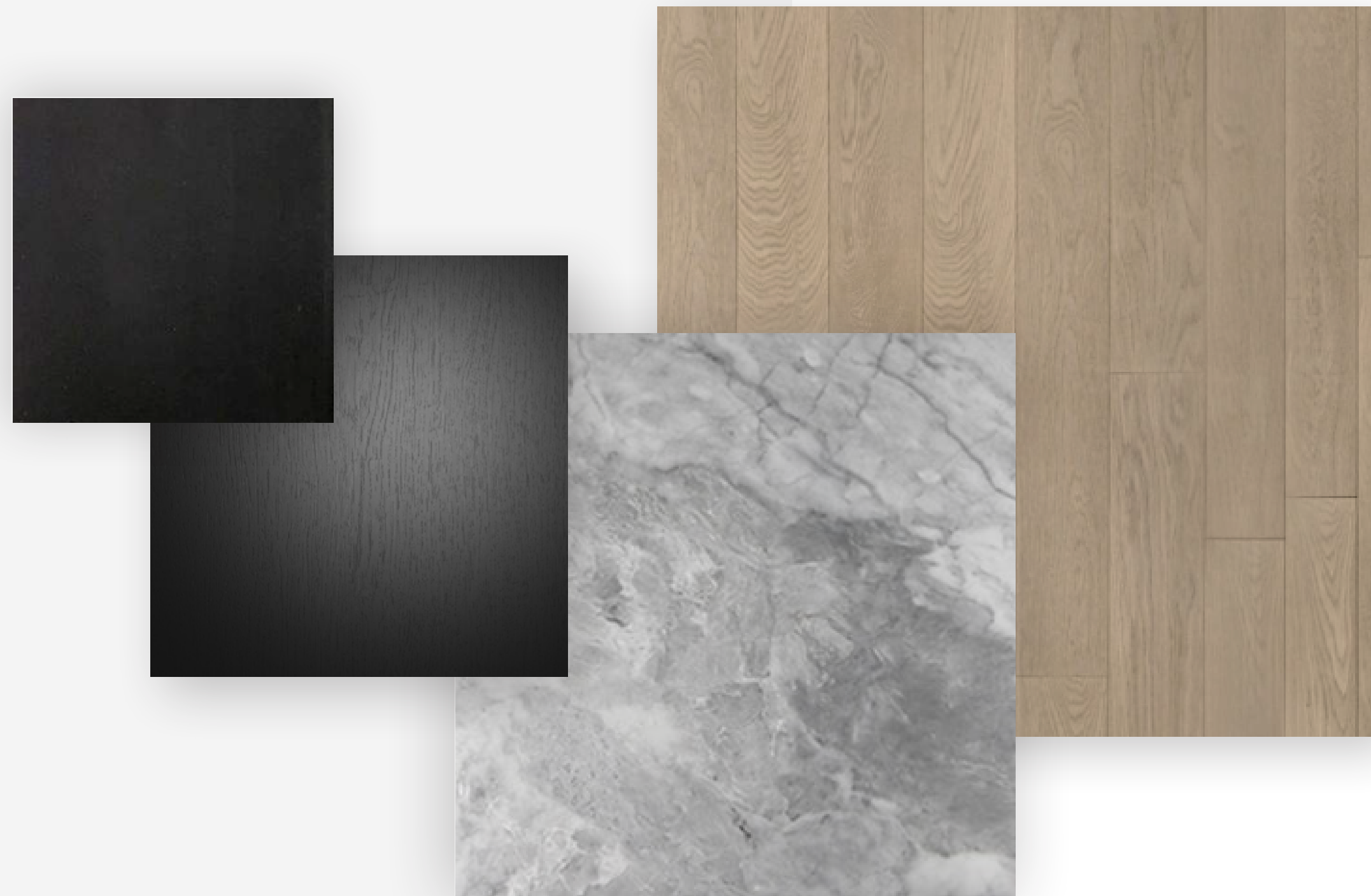
- Exposed Polished Concrete Floors
- Dimensional Porcelain Subway Tile Backsplash
- Straight-Grain Cherry Laminate
- Matte Black Metal Accents
- Grey Beige Carpeted Floors

## TIMBER

- 7" Wide Engineered Oak Floors
- Danube Honed Marble Backsplash
- Casual Rustic Black Laminate
- Matte Black Metal Accents
- Grey Beige Carpeted Floors







# Choose from one of two distinct building finishes

## ALLOY

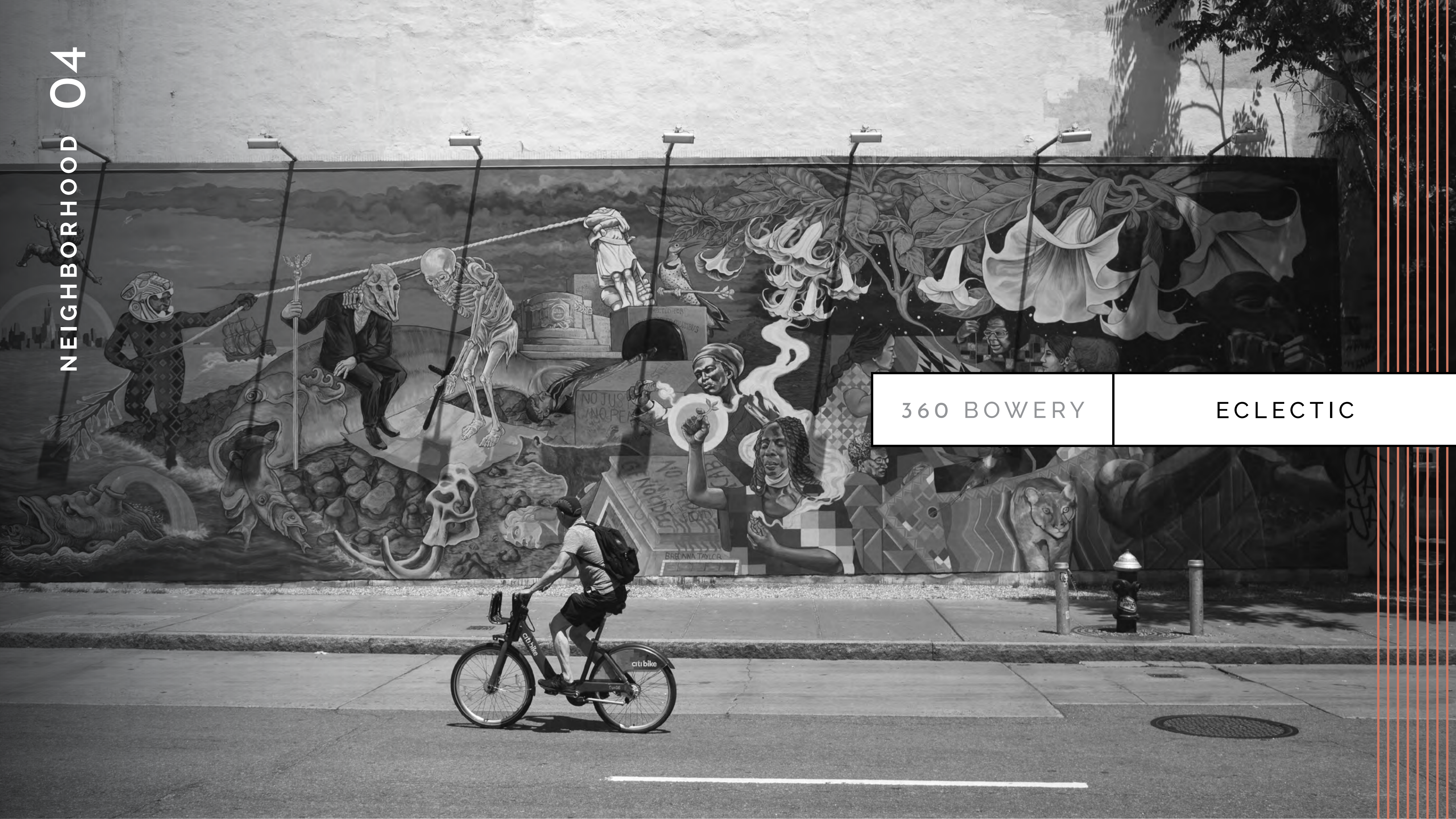
- Exposed Polished Concrete Floors
- Dimensional Porcelain Subway Tile Backsplash
- Straight-Grain Cherry Laminate
- Matte Black Metal Accents
- Grey Beige Carpeted Floors

## TIMBER

---

- 7" Wide Engineered Oak Floors
- Danube Honed Marble Backsplash
- Casual Rustic Black Laminate
- Matte Black Metal Accents
- Grey Beige Carpeted Floors





360 BOWERY

ECLECTIC



# Be a part of the character of NoHo

360 Bowery is a modern building in a historic neighborhood. NoHo's rich historical and architectural legacy date back hundreds of years. Known as New York's most fashionable district throughout the 19th century and home to a community of artists in the 1970s, culture and creativity are woven into the very fabric of the neighborhood.





NoHo has been an established enclave for art and fashion since the 1800s.







360 Bowery is located on the north end of Manhattan's oldest thoroughfare within NoHo's historic district.

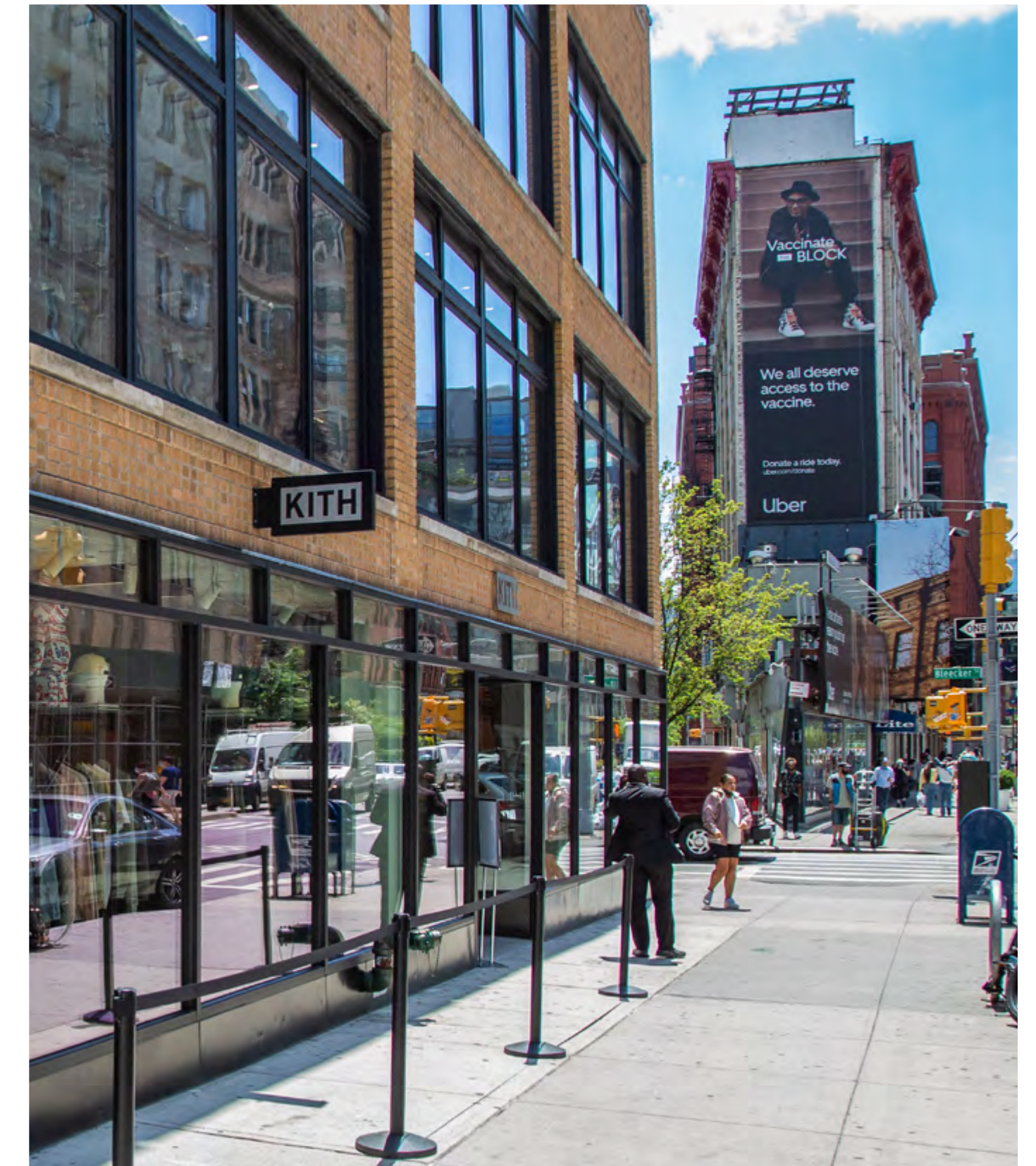
---



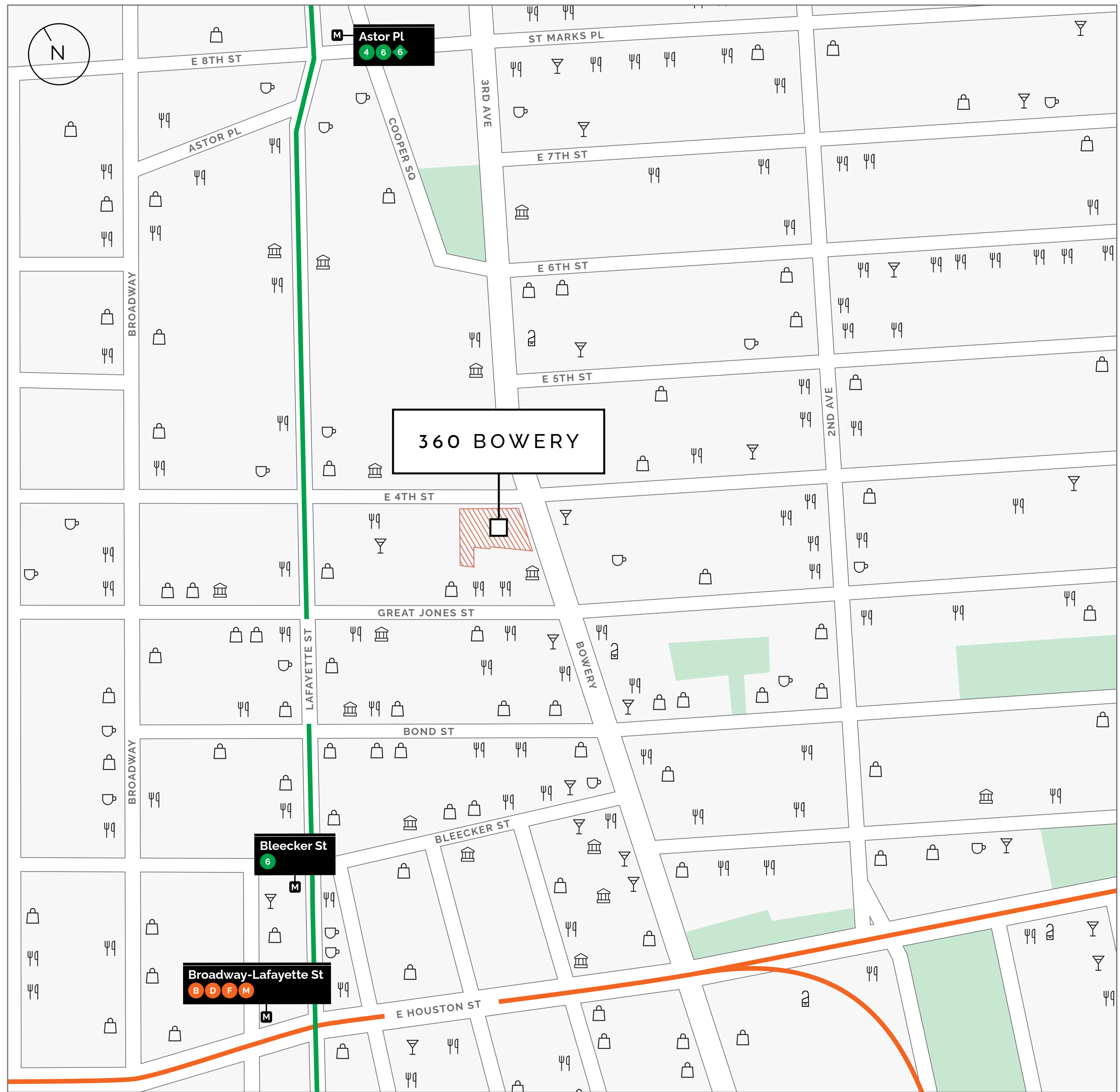




Today, NoHo is home to many of Manhattan's most eclectic boutiques, cafés, restaurants, and bars.







# Explore NoHo's local gems



## RESTAURANTS

ATLA  
Bessou  
Bite  
BONDST  
The Bowery Market  
Fish Cheeks  
Il Buco Alimentari & Vineria  
The Jones  
Levain Bakery - NoHo  
Misirizzi  
Quartino Bottega Organica  
The Smile  
Vic's



## CAFÉS

Gasoline Alley Coffee  
Lafayette Grand Cafe & Bakery  
Think Coffee  
Two Hands



## HOTELS

The Bowery Hotel  
The Standard



## NIGHTLIFE

310 Bowery Bar  
Phebe's  
Short Stories  
Sláinte Bar and Lounge  
Swift Hibernian Lounge  
Von  
The Wren



## ARTS & CULTURE

Bowery Mural  
The Hole  
Gene Frankel Theatre  
Zurcher Gallery



## SHOPPING

John Varvatos  
Kith  
Rag & Bone  
Supreme





360 BOWERY

VISIONARY

Theresa Chromati  
#WallsForACauseNYC





ARCHITECT

## Morris Adjmi Architects

---

Morris Adjmi Architects is a New York City-based architecture firm whose architecture and environments are composed of contemporary forms inspired by context and history. Their work is built on sound traditions that incorporate innovations in design, materials, and technology. Morris Adjmi established MA in 1997 following a fruitful ten-year partnership with the renowned Italian architect Aldo Rossi. The firm draws from this rich history and looks to the future, creating work that is both contemporary and timeless.





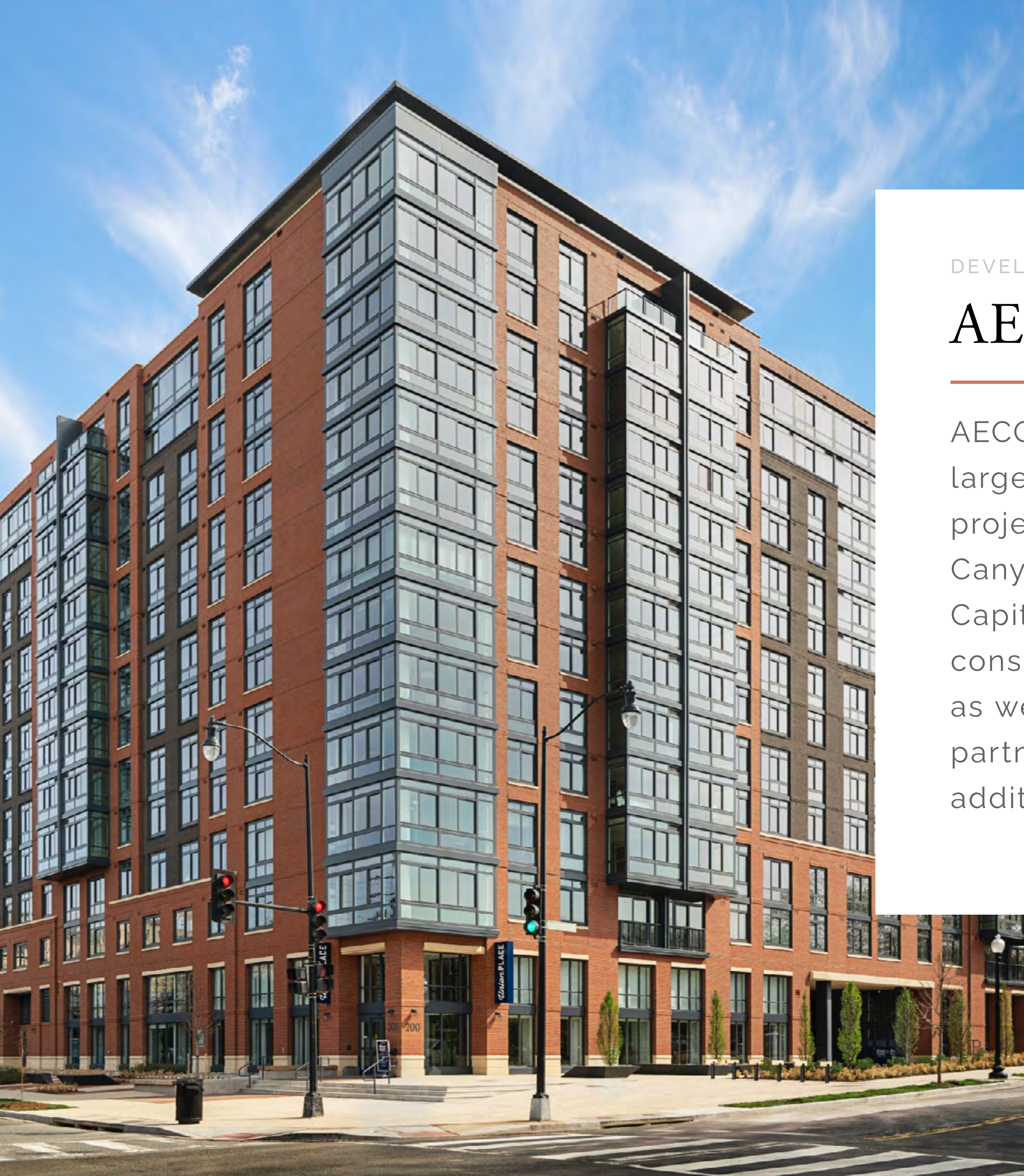
DEVELOPER

## CBSK Ironstate

---

Development partners Charles Blaichman, Abram and Scott Shnay, and Michael and David Barry collectively have over 100 years of experience in the fields of development, construction, property ownership and management in New York City and New Jersey real estate. Their portfolio includes some of the area's most admired and notable residential and commercial developments. The partners have established themselves as leaders in the industry and have a strong commitment to design excellence and quality construction.





DEVELOPER

## AECOM-Canyon Partners

AECOM-Canyon Partners was established to develop large-scale, institutional quality commercial real estate projects in top U.S. markets. In addition to AECOM-Canyon Partners serving as a capital source, AECOM Capital and its affiliates provide best-in-class design, construction management and engineering expertise as well as credit support for ACP's development partners. ACP is headquartered in Los Angeles with additional personnel in New York, Florida, and Texas.



CONTACT

# Experience it all at 360 Bowery

[360BOWERY.NYC](https://360BOWERY.NYC)



**DAVID KLEINER**

DAVID.KLEINER@JLL.COM

212.812.5954

**CARLEE PALMER**

CARLEE.PALMER@JLL.COM

212.812.6514